



Timetable Management System Web Application Development

Author: NakireKanti. Suvarna

Nakirekanti.Suvarna@galgotiasuniversity.edu.in Asst. Professor

Mob NO.- 9398484118

Harsh Malik

20scse1290077

Vishvendra Singh Sirohi

20scse1180143

Kaustubh Mani

20scse1180171

*Department of Computer Science and Engineering Galgotias
University*

*Plot No 2, Sector – 17 A, Yamuna Expressway, Greater Noida ,
Gautum Buddh Nagar , UP, India*

Abstract

A program operation system may be a style that is developed to administer higher support for workers during a council. The program operation system provides a performance to supply and look at the precise workers and pupil's program. this method conjointly contains a piece of information that stores workers and pupils distributed subject details and announcements before time. A council schedule may be a

temporal order of a group of workers and students within which all given constraints are happy. thus we've developed a sensible approach for erection workers and pupil schedule systems, which may be custom-built to suit any council schedule system. every worker and pupil will read their schedule once they are formed for a given semester and may conjointly edit the schedule



Keywords: -

*program management system, Timetable
module acts,*

*Educational ERP key issue in running
tutorial} center or essentially Associate in
Nursingacademic*

[Type here]

INTRODUCTION-

atmosphere is that the want for a the design schedule enterprises all learning well-planned, well- throughout, and disaccord-with relevancy manufacturing a schedule that free schedule. Back in the day once must be non-public to completely different constraints. technology wasn't in wide use, the Timetable enterprises learning with respect schedule was manually created by the to manufacturing a schedule that has to be educational establishment. private to the various constraints.

The schedule development method starts once every Head of the department provides the subsequent data to be used for scheduled programming. the most demand of this style is to administer the main points concerning the educational time, course, subject, class, and semester. To develop a program operation system for speakers during a council with pupil category attending. the standard of the schedule determines the standard of your time devoted by

workers, students, and administrators to educational learning. This educational timetabling includes:

- Student timetable.
- workers timetable.

LITERATURE SURVEY- C Coursicle

The course circle is the perfect companion for scheduling college or university timetable. Keep tracking of classes and add an event to a weekly schedule with ease. Coursicle features a beautiful color filled interface, optional multi-color week timetable. • Adding unlimited tasks. • Schedules are being stored instantly. • Also available as mobile application.

Limitations

1. No notification available.
2. Only single source user.

Educational ERP-

Education ERP manages and maintains a staff allotment, free

[Type here]

hours, take a look at the schedule, and app announcement system.robust information storing all material and real-time data upon the students and colleges among the academy. The timetable operation module permits you to efficiently manage the educational time via streamlining the schedule keeping the main focus on all subjects and their operation.

The Timetable operation module helps in orientating the right schedule and thereby permits colleges as per their vacuity.

- Manage schedule.
- Get the schedule grounded on acurrent weekday.
- Filter schedule for colleges.

SYSTEM ANALYSIS Ideal

- To develop an online operation as a program operation system for speakers during a council.
- System containing a formal structure of a schedule and every one category schedule with Being System
- Adding unlimited tasks.
- Schedules are being kept incontinently.

•Also obtainable as mobile operation. Limitations

•There are not any free hours mentioned.

•No temporary amendment of schedule.

Limitations

• There is no free hours mentioned.

• No temporary change of schedule.

• No notifications available.

• Only single source user.

•No notifications obtainable.

• solely single supply user.

Proposed System -

- program operation system planned with the formal structure of the schedule.
- It's erected for workers to use to send word their categories at a time.
- Admin is allowed to supply calendars and workers' IDs.
- Timetable operation system conjointly manages the pupil details, workers details, and schedule.
- to extend the effectiveness of managing the schedule, workers, and pupils.

[Type here]

- It deals with covering the data and sales of the pupil.
- Editing, adding, and deleting of records is bettered which ends incorrect resource operation of schedule knowledge.
- Created biographies and calendars are mechanically viewed by concerned workers that open the net operation with workers' ID.
Provides the looking out facilities supported varied factors like Timetable, Subject, Student, Course, year. It generates the report on the subject, student, course, and year.
- Manage the data of students and workers.
- Integration of all records, in fact, year and subject.

REQUIREMENT SPECIFICATION-

Hardware Specifications

- Computer tackle specifications are specialized descriptions of the computer's factors and capabilities. Processor speed model and manufacturer. Processor speed is usually indicated in gigacycle (GHz). The advanced the quantity, the

briskly the pc. Random Access Memory (RAM) is usually indicated in gigabytes (GB). Any RAM during a laptop, a lot of it will do contemporaneously. laborious fragment (often known as ROM) house is usually indicated in gigabytes (GB) and customarily refers to the quantum of data (like documents, music, and different data) your laptop will hold. different specifications may embody network (ethernet or wi-fi) appendages or audio and videotape capabilities. Processor: Pentium IV a pair of 4 GHz

- Hard disk: sixty GB
- RAM: one GB
- Monitor: 15" color
- CD Drive: LG52X
- Keyboard: Logitech a hundred and ten Keys
- Mouse: Logitech Mouse

Software Specifications -

A software conditions specification (SRS) is a comprehensive description of the intended purpose and terrain for software under development. The SRS completely describes what the software will do and

[Type here]

how it'll be anticipated to perform.

- Operating System Windows10

- Front End MS Visual Studio2010

- Back End MS SQL Garçon2005
Software Tools Used

- Designing:

XAMPP/WAMPP.

- Coding : Sublime editor.

- Database : MySQL.

Techniques Used -

- Front-End : HTML, CSS, Javascript, JQuery.

- Back-End : PHP.

- Database : MySQL and PHP Myadmin.

SYSTEM

IMPLEMENTATION -

- Admin login.

- Staff login.

- Notifying class timing.

- Templates for timetable creation.

- ☐ Class timetable.Exam

- ☐ timetable.

- Database management system with XAMPP application.

The system coil is the abstract model that defines the structure, gesture, and any views of the system. During this system, the coil has 2 designs. One may be a new attacker enrollment and another one is once attackers login in new attacker enrollment originally. conjointly the username is going to be given for identity and also the word is generated. the planning of the coil is to store and use the info within the information system.

Systems design may be a general discipline to handle objects called "systems" in the simplest way that supports logic concerning the structural parcels of those objects. Systems design may be a response to the abstract and sensible difficulties of the outline and also the style of complicated systems. The structure of a method system, or its coil, may be viewed as a Manichaean relationship between its structure and suprastructure. The structure describes a method

[Type here]

system's component passageway and its relations. The above Structure considers the super system of that the processing system may be a half. in concert traverses the method.

Admin-

architecture from one level of abstraction to the next, infrastructure becomes the basis for supra-structure and vice versa as one looks within a system or without requirements for a process system are derived at every hierarchical level.

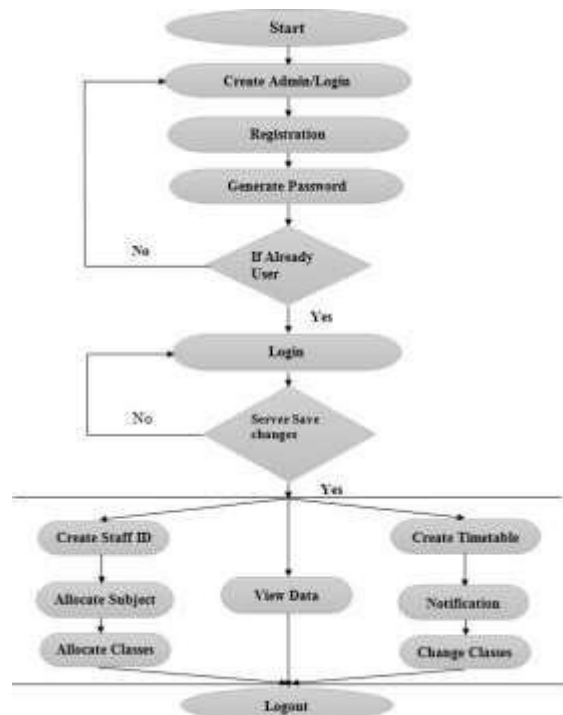


Figure 3 Admin System Architecture Staff

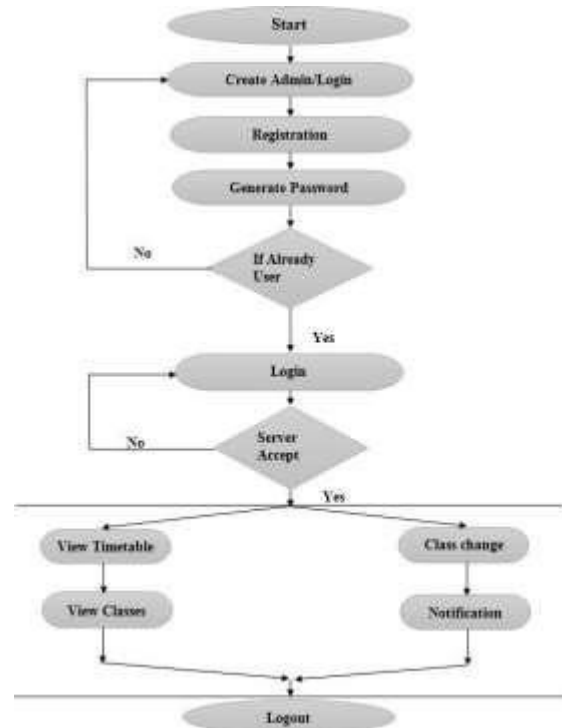
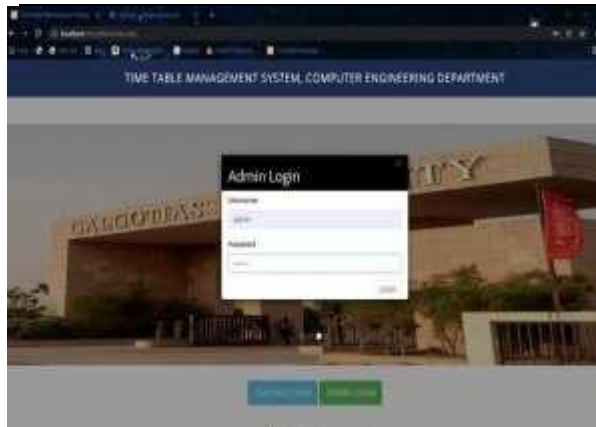


Figure 4 Staff System Architecture

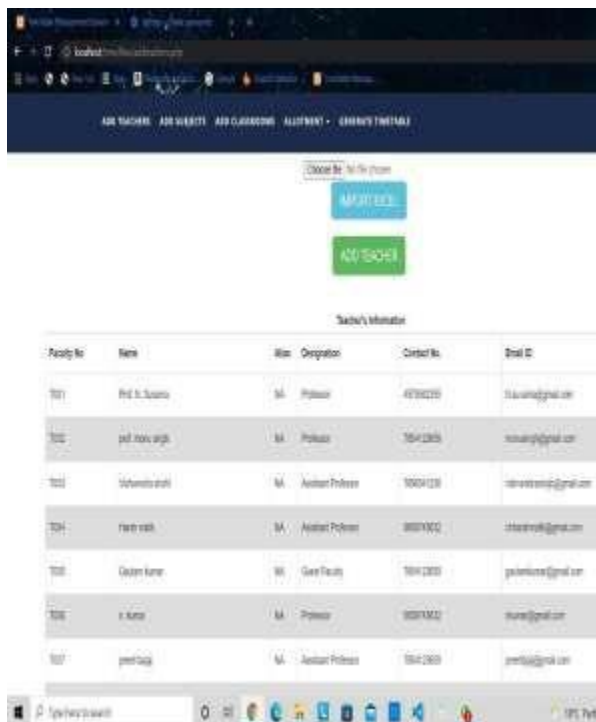
RESULT ON THE SCREENSHOT

Step 1: Login page.



Step 4: ADD CLASSROOMS

2. ADD THE TEACHER DETAILS



Step 3: ADD THE SUBJECTDETAILS

CONCLUSION

A web application was developed for time table management. It is a system that is developed to provide better support to staff in a college. The timetable module acts as a robust platform to forecast. The time table management system provides a function to create and view the time table for the specific staff and student. This system also contains a database that stores staff and student allotted subject details and notifications before time.

REFERENCES

<https://www.freeprojectz.com/p hpmysql-project/timetablemanagement- system>

<https://www.cybrosys.com/blog/ti metable-management-system-ineducational-erp>

<https://code-projects.org/studenttimetable-management-system-inphp- with-source-code>